

F A L L 2 0 1 7
C O L O R
R E P O R T

...inspired by the fall garden report



Sarah K Carpenter | GATHER Events | Gather Design Company

this look is inspired by...

17-1558
GRENADINE



GRENADINE

Attention-grabbing and evocative, this shade commands the room. Pair with varied tones of pinks, reds, and greens to bring the look to new heights.



Garnet Isla



Azalea Shantung



Poppy Bravado



this look is inspired by...

19-1725
TAWNY
PORT



TAWNY PORT

Rich and worldly, a ruddy rose-brown is ideal for a cool fall evening. Sparkling sequins, delicate pinks, and warm gold tones work perfectly with this deep color.



Wine Velvet



Rouge Ezra



Rosewood Faillé



this look is inspired by...

13-2808
BALLET
SLIPPER

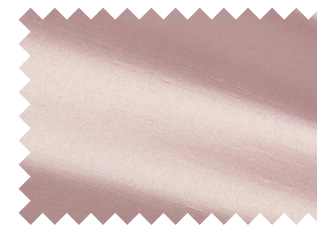


BALLET SLIPPER

Universally flattering, and an event favorite, Ballet Slipper is exquisite. Use mysterious shades of plum and dark rose to add a sophisticated touch; whites and ivories are classic and always stunning.



Maive Moda



Pink Shantung



Rosewood Cora

this look is inspired by...

16-1341
BUTTERUM



BUTTERUM

This toasty camel with gold undertones is the quintessential fall neutral. Patterns and textures embolden the tone, and allow for coordination with virtually any accent color.



Acorn Moda



Gold Alkaline



Beige Sonnet



this look is inspired by...

19-4029
NAVY PEONY



NAVY PEONY

A cosmopolitan neutral, Navy Peony is a perfect counterpart to both warm and cool colors. Bright reds and oranges perk up the deep tone, while silvers add a wonderfully crisp mood.



Slate Faille



Pacific Swell



Midnight Velvet



this look is inspired by...

17-4402
NEUTRAL
GRAY



NEUTRAL GRAY

Enigmatic and crowd pleasing, this relaxed shade coordinates with every color on the spectrum. The trend of mixed metallics plays naturally with this shade; mix with deep blues and striking ornaments for a moody vibe.



Baroque



Dove Velvet



Magma



this look is inspired by...

19-4524
SHADED
SPRUCE

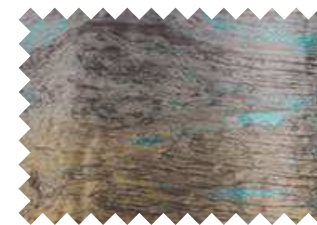


SHADED SPRUCE

Bringing the outdoors in has been trending in special event design, and this forest green brings evergreens and pinecones to mind. Coordinate with red tones and exotic blooms for an unexpected tablescape.



Mallard Velvet



Chrysocolla Marble



Arctic Velvet

Products in Photo: Mallard Velvet table linen & Scarlet Yuma napkin



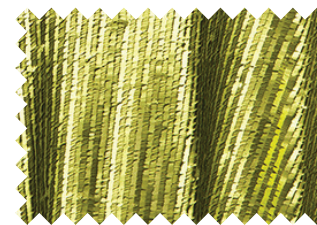
this look is inspired by...

16-0543
GOLDEN LIME



GOLDEN LIME

Announce opulence and vibrancy with this metallic-tinted green hue. Warm gold tones are a natural combination, and equally bold shades make a high-impact statement for meaningful soirees.



Citron Gigi



Lagoon Duet



Citron Lamour



this look is inspired by...

17-4041
MARINA



MARINA

This unexpected bright shade delivers excitement to a traditional autumn palette. A fresh cool blue is enhanced by contrasting bright colors, and adds energy to traditional tones.



Cornflower Shantung



Azure Agate



Lake Faille



this look is inspired by...

17-1145
AUTUMN
MAPLE



AUTUMN MAPLE

An organic hue that is anything but ordinary can spice up the table top. Introduce this surprising neutral to any palette to add a bronzed henna glow.



Amber Shantung



Bronze Jacks



Amber Twist

Products in Photo: Turmeric Velvet table linen



F A L L 2 0 1 7
C O L O R
R E P O R T

FOLLOW US @FABULOUS_EVENTS

FABULOUSEVENTS.COM

8 7 7 . 2 0 0 . C H A I R S

B R I N G Y O U R
I D E A S T O L I F E

Introducing BBJ Linen's new and improved Virtual Design Center! It's an easy-to-use tool for party planners, event designers, and brides-to-be, giving you the ability to create the perfect design for your next event. With the choice of different table sizes, event venues, lighting effects, and so much more - your creativity is the limit to your design. See all the new features and try the Virtual Design Center yourself!

T R Y T H E V I R T U A L
D E S I G N C E N T E R